

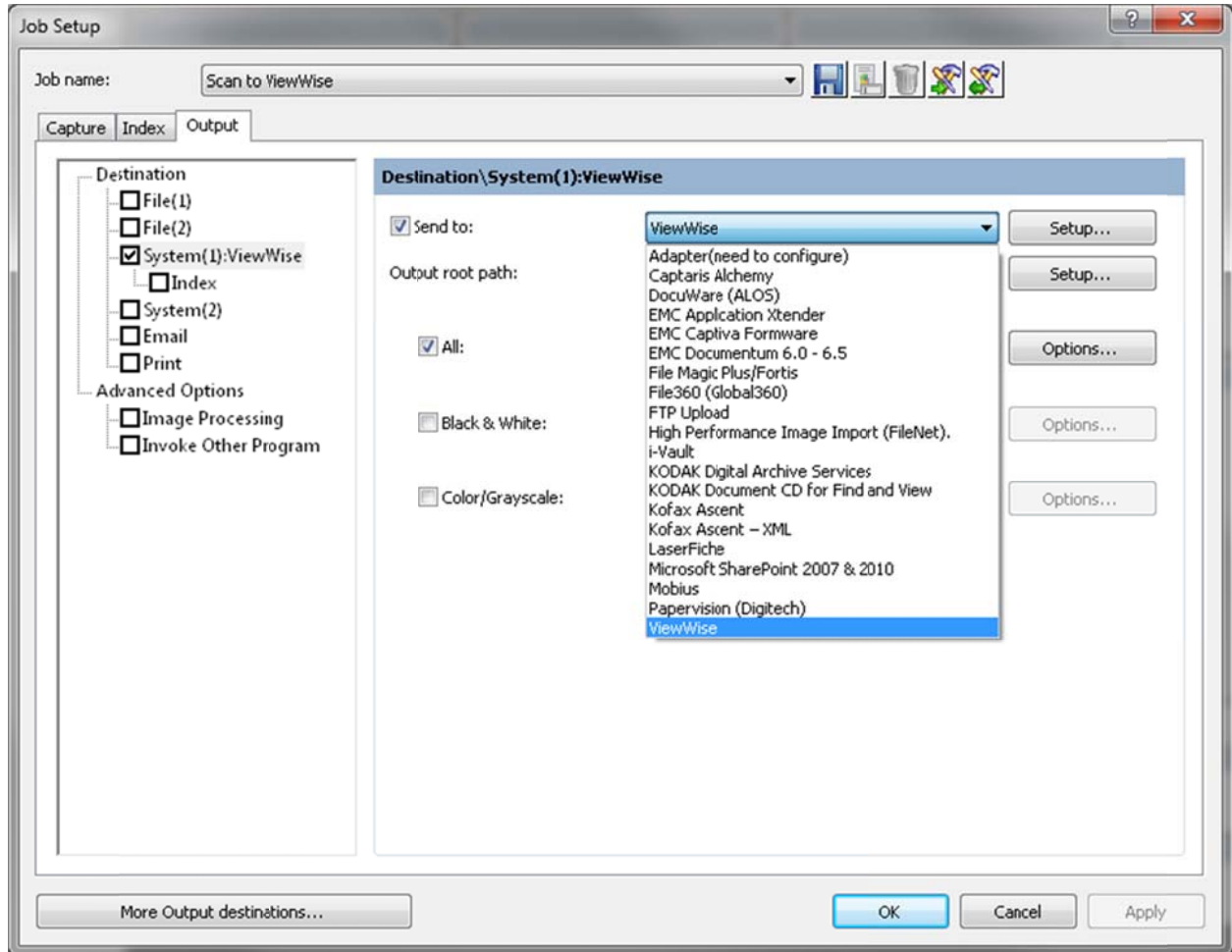
## **Kodak Capture: ViewWise System Output Destination (SOD)**

### **Output To ViewWise**

The Output to ViewWise option in Kodak capture, allows for captured content to be outputted into the ViewWise supported BIF file format. The outputted BIF file(s), along with the outputted Images are then processed by the ViewWise Automated Input Processor (AIP), which automatically adds them into a ViewWise Document Management Solution.

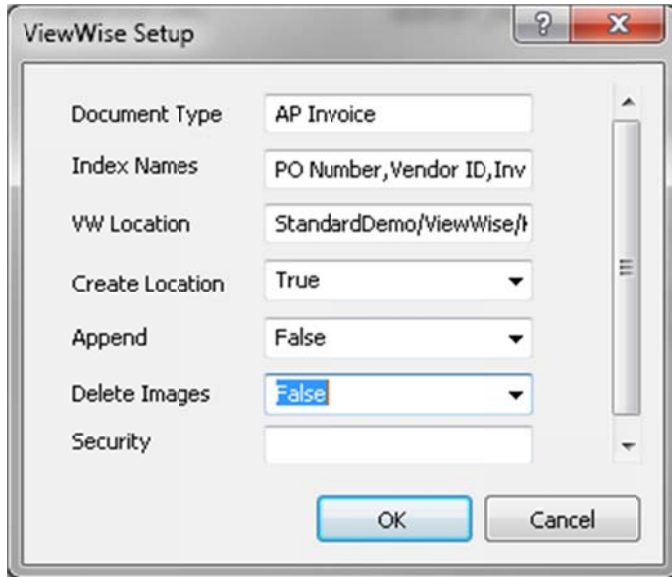
## Setting up Kodak Output to ViewWise

Once the ViewWise connector has been added to your Kodak Capture Pro software, a **ViewWise** option will appear as a “Send to:” option in the Output tab of the Kodak Capture Pro Job Setup screen.



To output a Job to a ViewWise System, select ViewWise as the “Send to:” option. Once you have selected ViewWise as the send to option, the next step is to select the file format you wish to have Kodak Output the images as (e.g. PDF, TIF, JPG, etc.). After your file format is selected and the options for the format are specified, you can next setup the specific ViewWise output settings.

To setup the ViewWise settings, select the **setup** button to the right of the ViewWise Send to: option. The ViewWise Setup Dialog will appear.



In the ViewWise Setup dialog, the following fields<sup>1</sup> should be entered.

1. **Document Type** - Under Document Type, enter the name of the ViewWise document type that you will be outputting this particular scanned job to. This name is **case sensitive** and must match the ViewWise Document Type name exactly as it appears in the ViewWise System.
2. **Index Names** - Next enter Index Names for the index fields that are going to be populated from Kodak Capture (Job Setup > Index > Document) to ViewWise. These fields are separated with a comma.

The **Index Field Names** entered must correspond to those for the ViewWise **Document Type** specified in step 1. The **Index Field** names should be typed as they appear in ViewWise and are case sensitive. These index fields will also need to be named the same in Kodak Capture's Job Setup > Index tab as they appear in ViewWise.



If the Kodak Capture Index name does not match the ViewWise Index name as it appears in the ViewWise setup dialog, the index entry will not be exported to the BIF file and the import process will fail.

<sup>1</sup> Familiarity with and access to the ViewWise Document Types and the ViewWise Navigator structure is required.



This field also supports dynamic entries based on date or index fields. See the AIP documentation for syntax and a complete list of supported entries.

4. **Append** - The Append option controls how documents with Identical Index values are handled when importing into ViewWise. When *True*, the documents are appended into an existing ViewWise Document that has matching index values in the location specified, when *False* a new document is created.
5. **Delete Images** - Setting the Delete Images option to *True* will tell the AIP to delete the images from the Kodak batch once they have been imported / processed into ViewWise via the AIP.
6. **Security** – Security is an advanced option that allows you to preset security for the documents added in that process location. See the AIP documentation for more information.